

M583c on a John Deere 1050C

Lifting Capacity

- Maximum Lift: 140,000 lb (63,504 kg)*
- Maximum Load: 119,000 lb (53,978 kg)*
- Maximum Working Load: 88,200 lb (40,008 kg)* **
 *@ 4 ft overhang
 ** With redesigned, upgraded blocks. Prior standard units rated @ 72,000 lbs (32,659 kg)

Boom and Blocks

- Standard Boom: 24 ft (7.3 m)
- Boom Line Parts: 5
- Load Line Parts: 6
- Typical Hook Speed (HI/LOW): 60/30 ft/min (18.3/9.1 m/min)

Hydraulic System

- Directional Control Valve: 3-Section, load sense, pressure compensated with pilot controls
- Max. Operating Pressure: 3,100 psi (214 bar)
- Max. Allowable Flow: 70 gpm (265 l/min)

Winches

Boom Winch

- Planetary, two-speed, dual brake system
- Wire rope installed: 205 ft (62.4 m)
- Max. cable capacity: 242 ft (73.8 m)
- Wire Rope Diameter: 3/4 in (19 mm)*

Load Winch

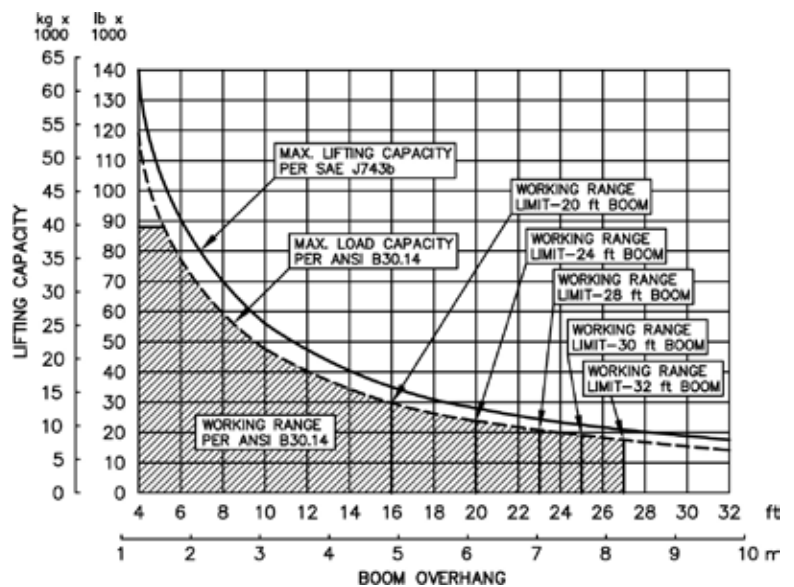
- Planetary, two-speed, dual brake system, free-fall
- Wire rope installed: 225 ft (68.6 m)
- Max. cable capacity: 423 ft (129 m)
- Wire Rope Diameter: 3/4 in (19 mm)*
 * Minimum breaking strength: 58,800 lb (26,672 kg)

Weights

- Removable counterweight segments: 12 segments @ 1,125 lbs (510 kg) each
- Total extendible counterweight: 22,160 lbs (10,051 kg)
- Total sideboom attachment weight: 39,300 lb (17,826 kg)
- Total operating weight: 101,380 lbs (45,985 kg)
- Shipping weight: Tractor 84,380 lbs (38,274 kg)
 Boom & CWT 17,000 lbs (7,711 kg)



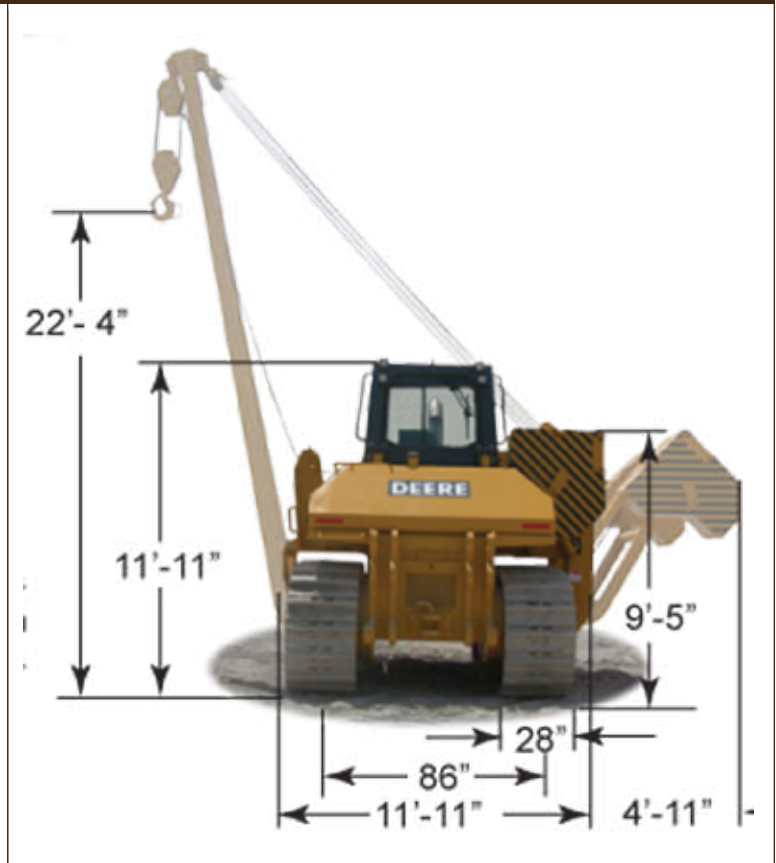
M583C Hydraulic Sideboom Attachment



M583c on a John Deere 1050C

Features

- Tubular A-Frame boom engineered for exceptional support at maximum lift capacity and easy detachment.
- Multi-axis, hydraulic joystick allows simultaneous, precise control of the load and boom functions with one hand. Single lever, hydraulic remote control valves are used for counterweight and two-speed functions. The controls are easy to operate and require minimal operator training.
- Hydraulic boom stop automatically prevents system over travel and damage to boom
- System employs tractor's existing hydraulic pump, filter and reservoir for convenience of replacement parts and maintenance.
- Sideboom features quick release hinge pins for easy boom removal and maintenance.
- Hydraulic oil cooler.
- Hydraulically operated, four-bar linkage counterweight system adds maximum stability and lifting capability. Low, compact design provides balanced weight distribution for optimum operating control and excellent visibility.
- Counterweight segments can be easily removed for shipping.
- Free-fall function on load winch.
- Optional boom lengths available.



M583c Hydraulic Sideboom Attachment

Midwestern's sidebooms are manufactured, installed, and tested to meet the requirements outlined in ANSI/AMSE B30. 14-2004 for sideboom tractors. Capacity ratings are made with the tractor on flat, level ground with the rating load hanging from the load-line hook per SAE J743-92. All Midwestern structural welding complies with the American Welding Society (AWS) Code Welding Earthmoving and Construction Equipment D14.3-94.