

## M583CH on a Caterpillar D8N

### Lifting Capacity

- Maximum Lift: 140,000 lb (63,504 kg)\*
- Maximum Load: 119,000 lb (53,978 kg)\*
- Maximum Working Load: 88,200 lb (40,008 kg)\* \*\*

\*@ 4 ft overhang

\*\* With redesigned, upgraded blocks. Prior standard units rated @ 72,000 lbs (32,659 kg)

### Boom and Blocks

- Standard Boom: 24 ft (7.3 m)
- Boom Line Parts: 5
- Load Line Parts: 6
- Typical Hook Speed (HI/LOW): 60/30 ft/min (18.3/9.1 m/min)

### Hydraulic System

- Directional Control Valve: 3-Section, load sense, pressure compensated with pilot controls
- Maximum Operating Pressure: 3,500 psi (241 bar)
- Maximum Allowable Flow: 70 gpm (265 l/min)

### Winches

#### Boom Winch

- Planetary, two-speed, dual brake system
- Wire rope installed: 205 ft (62.5 m)
- Max. cable capacity: 242 ft (73.8 m)
- Wire Rope Diameter: 3/4 in (19 mm)\*

#### Load Winch

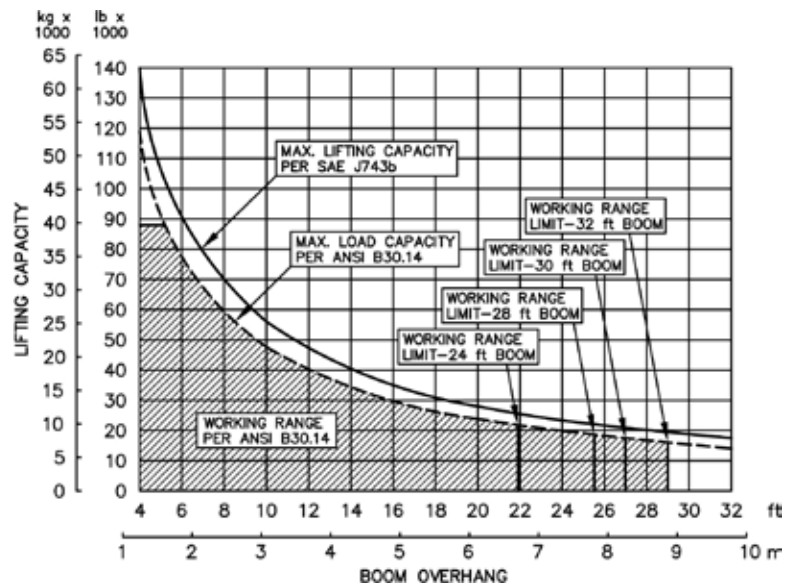
- Planetary, two-speed, dual brake system, free-fall
- Wire rope installed: 205 ft (62.5 m)
- Max. cable capacity: 423 ft (129 m)
- Wire Rope Diameter: 3/4 in (19 mm)\*
- \* Minimum breaking strength: 58,800 lb (26,672 kg)

### Weights

- Removable counterweight segments:  
14 total segments - 7 @ 1,400 lb (635 kg) each,  
7 @ 1,260 (571.5 kg) each
- Total extendible counterweight: 23,000 lb (10,433 kg)
- Total sideboom attachment weight: 37,500 lb (17,010 kg)



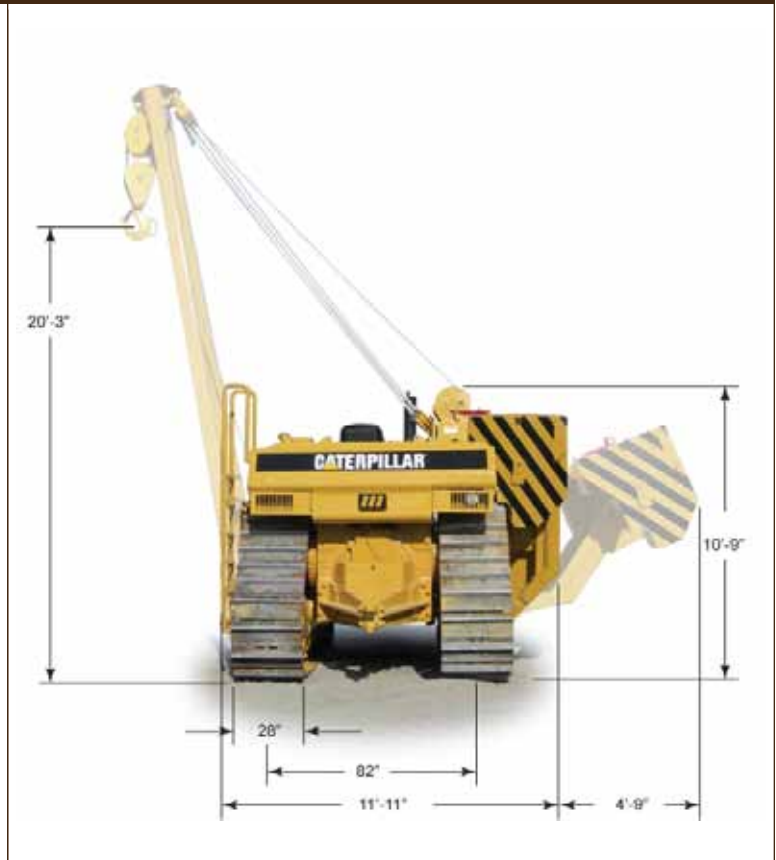
## M583CH Hydraulic Sideboom Attachment



## M583CH on a Caterpillar D8N

### Features

- Tubular A-Frame boom engineered for exceptional support at maximum lift capacity and easy detachment.
- Multi-axis, hydraulic joystick allows simultaneous, precise control of the load and booms functions with one hand. Single-lever, hydraulic remote control valves are used for counterweight and two-speed functions. The controls are easy to operate and require minima operator trining.
- Hydraulic boom stop automatically prevents system over travel and damage to boom
- System employs tractor's existing hydraulic pump, filter and reservoir for convenience of replacement parts and maintenance.
- Sideboom features quick release hinge pins for easy boom removal and maintenance.
- Hydraulic oil cooler.
- Hydraulically operated, four-bar linkage counterweight system adds maximum stability and lifting capability. Low, compact design provides balanced weight distribution for optimum operating control and excellent visibility.
- Free-fall function on load winch.
- Optional boom lengths available.



## M583CH Hydraulic Sideboom Attachment

Midwestern's sidebooms are manufactured, installed, and tested to meet the requirements outlined in ANSI/AMSE B30. 14-2004 for sideboom tractors. Capacity ratings are made with the tractor on flat, level ground with the rating load hanging from the load-line hook per SAE J743-92. All Midwestern structural welding complies with the American Welding Society (AWS) Code Welding Earthmoving and Construction Equipment D14.3-94.