

M572c XL on a John Deere 850J LGP

Lifting Capacity

- Maximum Lift: 100,000 lb (45,359 kg)*
 - Maximum Load: 85,000 lb (38,555 kg)*
 - Maximum Working Load: 58,800 lb (26,672 kg)* **
- *@ 4 ft overhang
 ** With redesigned, upgraded blocks. Prior standard units rated @ 46,000 lbs (20,866 kg)

Boom and Blocks

- Standard Boom: 20 ft (6.1 m)
- Boom Line Parts: 4
- Load Line Parts: 4
- Typical Hook Speed (HI/LOW): 70/35 ft/min (21.3/10.7 m/min)

Hydraulic System

- Directional Control Valve: 3-Section, load sense, pressure compensated with pilot controls
- Maximum Operating Pressure: 3,000 psi (207 bar)
- Maximum Allowable Flow: 45 gpm (170 l/min)

Winches

Boom Winch

- Planetary, two-speed, dual brake system
- Wire rope installed: 140 ft (42.7 m)
- Max. cable capacity: 242 ft (73.8 m)
- Wire Rope Diameter: 3/4 in (19 mm)*

Load Winch

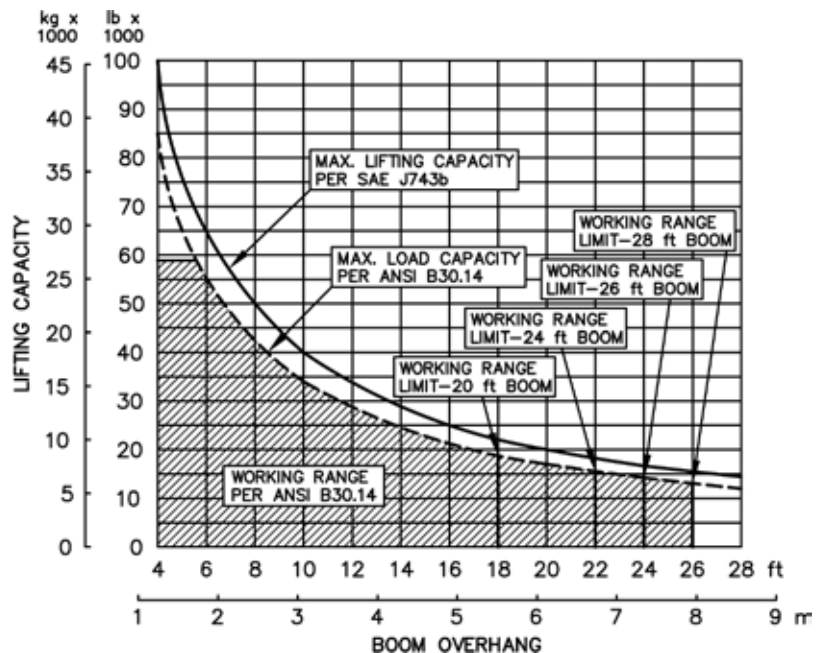
- Planetary, two-speed, dual brake system, free-fall
 - Wire rope installed: 160 ft (48.8 m)
 - Max. cable capacity: 423 ft (129 m)
 - Wire Rope Diameter: 3/4 in (19 mm)*
- * Minimum breaking strength: 58,800 lb (26,672 kg)

Weights

- Removable counterweight segments: 5 segments @ 1,400 lb (635 kg) each
- Total extendible counterweight (segments and frame): 15,050lb (6,827kg)
- Total sideboom attachment weight: 28,300 lb (12,837 kg)



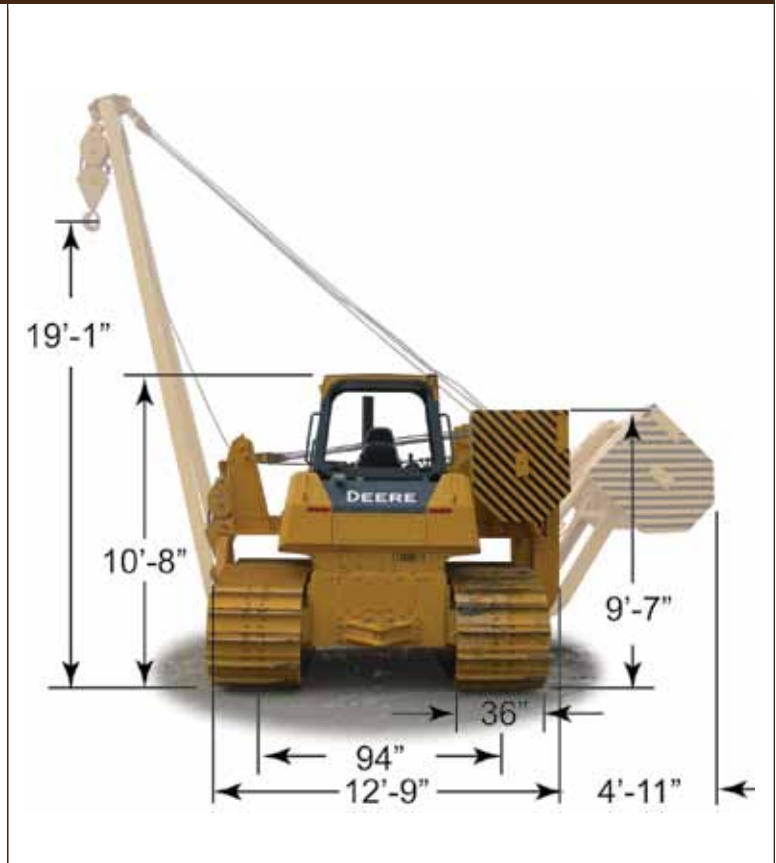
M572c XL Hydraulic Sideboom Attachment



M572c XL on a John Deere 850J LGP

Features

- Tubular A-frame boom engineered for exceptional support at maximum lift capacity and easy detachment.
- Multi-axis, hydraulic joystick allows simultaneous control of load and boom functions with one hand. Single lever, hydraulic remote control valves are used for counterweight and two-speed functions. The controls are easy to operate and require minimal operator training.
- Hydraulic boom stop automatically prevents system over travel and damage to boom.
- System employs tractor's existing hydraulic pump, filter and reservoir for convenience of replacement parts and maintenance.
- Sideboom features quick release hinge pins for easy boom removal and maintenance.
- Hydraulically operated, four-bar linkage counterweight system adds maximum stability and lifting capability. Low, compact design provides balanced weight distribution for optimum operating control and excellent visibility.
- Free-fall function on load winch.



M572c XL Hydraulic Sideboom Attachment

Midwestern's sidebooms are manufactured, installed, and tested to meet the requirements outlined in ANSI/AMSE B30. 14-2004 for sideboom tractors. Capacity ratings are made with the tractor on flat, level ground with the rating load hanging from the load-line hook per SAE J743-92. All Midwestern structural welding complies with the American Welding Society (AWS) Code Welding Earthmoving and Construction Equipment D14.3-94.