

M571C XL

Lifting Capacity

- Maximum Lift: 80,000 lb (36,288 kg)*
 - Maximum Load: 68,000 lb (30,845 kg)*
 - Maximum Working Load: 58,800 lb (26,672 kg)* **
- *@ 4 ft overhang
 ** With redesigned, upgraded blocks. Prior standard units rated @ 46,000 lbs (20,866 kg)

Boom and Blocks

- Standard Boom: 20 ft (6.1 m)
- Boom Line Parts: 4
- Load Line Parts: 4
- Typical Hook Speed (HI/LOW): 55/27 ft/min (16.8/8.2 m/min)

Hydraulic System

- Directional Control Valve: 3-Section, open center with manual levers
- Maximum Operating Pressure: 3,000 psi (207 bar)
- Maximum Allowable Flow: 63 gpm (238 l/min)

Winches

Boom Winch

- Planetary, single-speed, dual brake system
- Wire rope installed: 140 ft (42.7 m)
- Max. cable capacity: 242 ft (73.8 m)
- Wire Rope Diameter: 3/4 in (19 mm)*

Load Winch

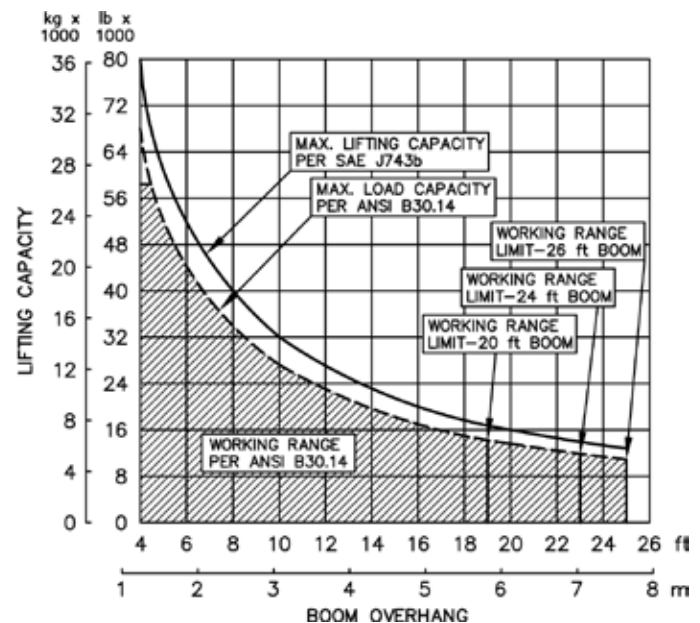
- Planetary, two-speed, dual brake system
 - Wire rope installed: 160 ft (48.8 m)
 - Max. cable capacity: 242 ft (73.8 m)
 - Wire Rope Diameter: 3/4 in (19 mm)*
- * Minimum breaking strength: 58,800 lb (26,672 kg)

Weights

- Removable counterweight segments: 6 segments @ 1,335 (606 kg) each
- Total extendible counterweight (segments & frame): 15,900 lb (7,121 kg)
- Total sideboom attachment weight: 27,000 lb (12,247 kg)



M571C XL Hydraulic Sideboom Attachment



M571C XL**Features**

- Tubular A-Frame boom engineered for exceptional support at maximum lift capacity and easy detachment.
- Three lever hydraulic control system allows simultaneous control of load and boom functions. The controls are easy to operate and require minimal operator training.
- Hydraulic boom stop automatically prevents system over travel and damage to boom
- System employs tractor's existing hydraulic pump, filter and reservoir for convenience of replacement parts and maintenance.
- Sideboom features quick release hinge pins for easy boom removal and maintenance.
- Hydraulic oil cooler.
- Hydraulically operated, four-bar linkage counterweight system adds maximum stability and lifting capability. Low, compact design provides balanced weight distribution for optimum operating control and excellent visibility. Counterweight segments can be easily removed for shipping.
- Free-fall function on load winch.
- Optional boom lengths available.
- Optional multi-axis, hydraulic joystick control.
- Optional remote hydraulic pilot controls.

Tractor Models

Caterpillar D7E
Caterpillar D7F
Caterpillar D7G

Midwestern's sidebooms are manufactured, installed, and tested to meet the requirements outlined in ANSI/AMSE B30. 14-2004 for sideboom tractors. Capacity ratings are made with the tractor on flat, level ground with the rating load hanging from the load-line hook per SAE J743-92. All Midwestern structural welding complies with the American Welding Society (AWS) Code Welding Earthmoving and Construction Equipment D14.3-94.

Notes