

M562c

Lifting Capacity

- Maximum Lift: 48,000 lb (21,773 kg)*
- Maximum Load: 40,800 lb (18,507 kg)*
- Maximum Working Load: 30,000 lb (13,608 kg)*
- *@ 4 ft overhang

Boom and Blocks

- Standard Boom: 20 ft (6.1 m)
- Boom Line Parts: 3
- Load Line Parts: 3
- Typical Hook Speed (HI/LOW): 65/32 ft/min (19.8/9.8 m/min)

Hydraulic System

- Directional Control Valve: 3-Section, open center with manual levers
- Maximum Operating Pressure: 3,000 psi (207 bar)
- Maximum Allowable Flow: 63 gpm (238 l/min)

Winches

Boom Winch

- Planetary, single speed, dual brake system
- Wire rope installed: 150 ft (45.7 m)
- Max. cable capacity: 368 ft (112 m)
- Wire Rope Diameter: 5/8 in (16 mm)*

Load Winch

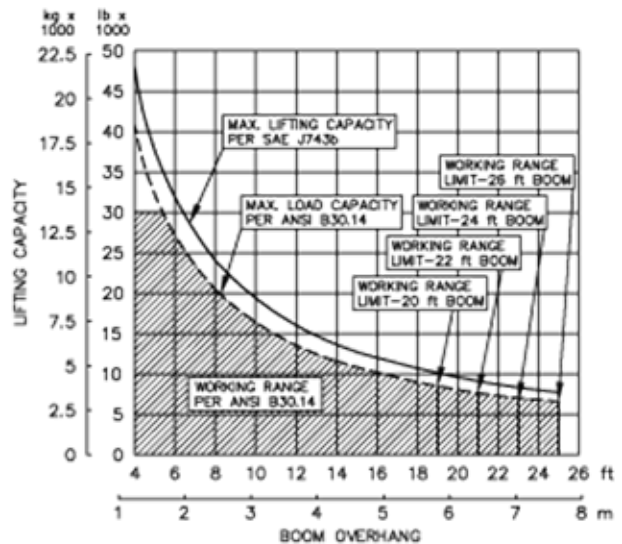
- Planetary, two-speed, dual brake system
- Wire rope installed: 150 ft (45.7 m)
- Max. cable capacity: 368 ft (112 m)
- Wire Rope Diameter: 5/8 in (16 mm)*
- * Minimum breaking strength: 41,200 lb (18,688 kg)

Weights

- Removable counterweight segment: 6 @ 896 lb (406 kg) each
- Total extendible counterweight: 8,200 lb (3,720 kg)
- Total sideboom attachment weight: 15,500 lb (7,031 kg)



M562c Hydraulic Sideboom Attachment



SPECIFIED EQUIPMENT:
 5/8" (16 mm) WIRE ROPE [41,200 lb (18,688 kg) MIN. BREAKING STRENGTH]
 3 PART LOAD LINE, 3 PART BOOM LINE
 20 ft (6.1 m) BOOM (STANDARD)
 22 ft (6.7 m), 24 ft (7.3 m), 26 ft (7.9 m) BOOM (OPTIONAL)
 15 ton (13.6 metric ton) WLL HOOK BLOCK
 8,200 lb (3,720 kg) COUNTERWEIGHT (EXTENDED)

M562c**Features**

- Tubular A-Frame boom engineered for exceptional support at maximum lift capacity and easy detachment.
- Three lever hydraulic control system allows simultaneous control of load and boom functions. The controls are easy to operate and require minimal operator training.
- Hydraulic boom stop automatically prevents system over travel and damage to boom
- System employs tractor's existing hydraulic pump, filter and reservoir for convenience of replacement parts and maintenance.
- Sideboom features quick release hinge pins for easy boom removal and maintenance.
- Hydraulic oil cooler.
- Hydraulically operated, four-bar linkage counterweight system adds maximum stability and lifting capability. Low, compact design provides balanced weight distribution for optimum operating control and excellent visibility. Counterweight segments can be easily removed for shipping.
- Optional boom lengths available.
- Optional multi-axis, hydraulic joystick control.
- Optional remote hydraulic pilot controls.

Tractor Models

Caterpillar D6D
Caterpillar D6D LGP

John Deere 750C
John Deere 750C LGP
John Deere 750J LT

Midwestern's sidebooms are manufactured, installed, and tested to meet the requirements outlined in ANSI/AMSE B30. 14-2004 for sideboom tractors. Capacity ratings are made with the tractor on flat, level ground with the rating load hanging from the load-line hook per SAE J743-92. All Midwestern structural welding complies with the American Welding Society (AWS) Code Welding Earthmoving and Construction Equipment D14.3-94.

Notes