

M560c on a John Deere 750J LGP

Lifting Capacity

- Maximum Lift: 60,000 lb (27,215 kg)*
- Maximum Load: 51,000 lb (23,133 kg)*
- Maximum Working Load: 46,000 lb (20,866 kg)*
- *@ 4 ft overhang

Boom and Blocks

- Standard Boom: 20 ft (6.1 m)
- Boom Line Parts: 3
- Load Line Parts: 4
- Typical Hook Speed (HI/LOW): 100/50 ft/min (30.5/15.2 m/min)

Hydraulic System

- Directional Control Valve: 3-Section, load sense, pressure compensated with remote control
- Maximum Operating Pressure: 3,000 psi (207 bar)
- Maximum Allowable Flow: 45 gpm (170 l/min)

Winches

Boom Winch

- Planetary, single speed, dual brake system
- Wire rope installed: 150 ft (45.7 m)
- Max. cable capacity: 368 ft (112 m)
- Wire Rope Diameter: 5/8 in (16 mm)*

Load Winch

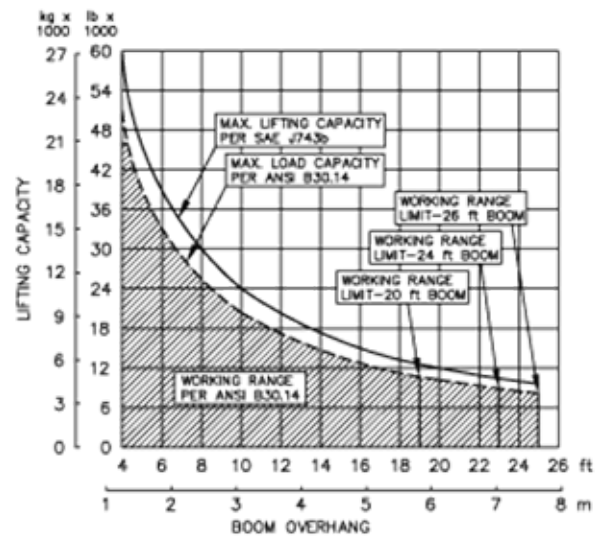
- Planetary, two-speed, dual brake system,
- Wire rope installed: 160 ft (48.8 m)
- Max. cable capacity: 423 ft (129 m)
- Wire Rope Diameter: 3/4 in (19 mm)**
- * Minimum breaking strength: 58,800 lb (26,672 kg)
- ** Minimum breaking strength: 41,200 lb (18,688 kg)

Weights

- Removable counterweight segments: 6 segments @ 896 lb (406 kg) each
- Total extendible counterweight: 8,200 lb (3,720 kg)
- Total sideboom attachment weight: 15,500 lb (7,031 kg)



M560c Hydraulic Sideboom Attachment

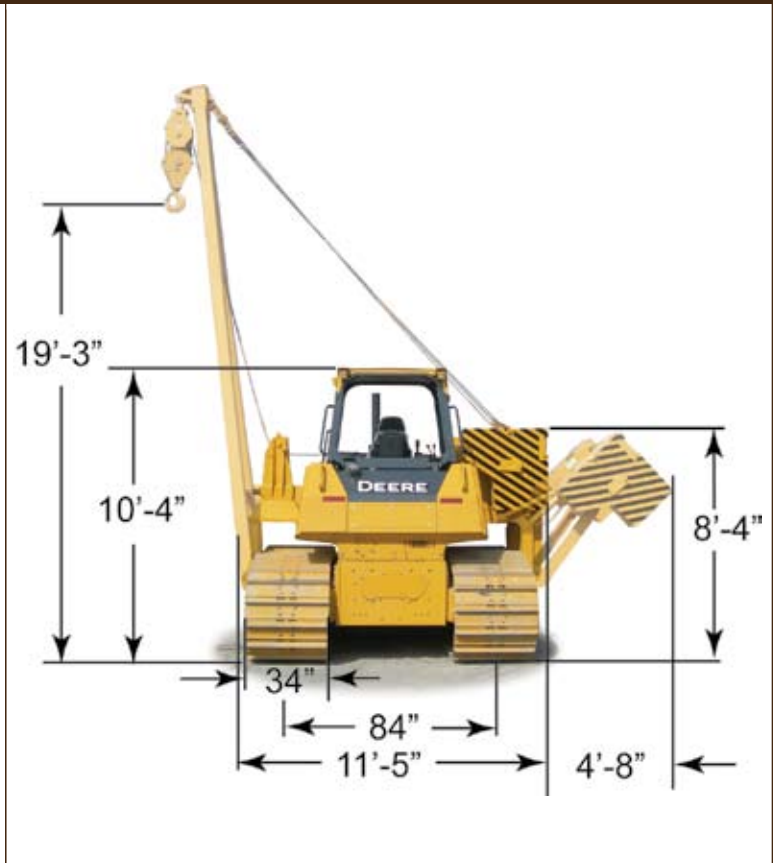


SPECIFIED EQUIPMENT:
 5/8" (16 mm) WIRE ROPE [41,200 lb (18,688 kg) MIN. BREAKING STRENGTH]
 3/4" (19 mm) WIRE ROPE [58,800 lb (26,672 kg) MIN. BREAKING STRENGTH]
 4 PART LOAD LINE (3/4"), 3 PART BOOM LINE (5/8")
 20 ft (6.1 m) BOOM (STANDARD), 24 ft (7.3 m), 26 ft (7.9 m) BOOM (OPTIONAL)
 23 ton (20.9 metric ton) WLL HOOK BLOCK
 8,200 lb (3,720 kg) COUNTERWEIGHT (EXTENDED)

M560c on a John Deere 750J LGP

Features

- Tubular A-frameboom engineered for exceptional support at maximum lift capacity and easy detachment.
- Multi-axis, hydraulic joystick allows simultaneous, precise control of the load and boom functions with one hand. Single-level, hydraulic remote control valves are used for counterweight and two-speed functions. The controls are easy to operate and require minimal operator training.
- Hydraulic boom stop automatically prevents system over travel and damage to boom.
- System employs tractor's existing hydraulic pump, filter and reservoir for convenience of replacement parts and maintenance.
- Sideboom features quick release hinge pins for easy boom removal and maintenance.
- Hydraulically operated, four-bar linkage counterweight system adds maximum stability and lifting capability. Low, compact design provides balanced weight distribution for optimum operating control and excellent visibility. Counterweight segments can be easily removed for shipping.
- Optional boom lengths available.



M560c Hydraulic Sideboom Attachment

Midwestern's sidebooms are manufactured, installed, and tested to meet the requirements outlined in ANSI/AMSE B30. 14-2004 for sideboom tractors. Capacity ratings are made with the tractor on flat, level ground with the rating load hanging from the load-line hook per SAE J743-92. All Midwestern structural welding complies with the American Welding Society (AWS) Code Welding Earthmoving and Construction Equipment D14.3-94.