

M560c

Lifting Capacity

- Maximum Lift: 60,000 lb (27,215 kg)*
- Maximum Load: 51,000 lb (23,133 kg)*
- Maximum Working Load: 46,000 lb (20,866 kg)*
- *@ 4 ft overhang

Boom and Blocks

- Standard Boom: 20 ft (6.1 m)
- Boom Line Parts: 3
- Load Line Parts: 4
- Typical Hook Speed (HI/LOW): 100/50 ft/min (30.5/15.2 m/min)

Hydraulic System

- Directional Control Valve: 3-Section, load sense, pressure compensated with remote control
- Maximum Operating Pressure: 3,000 psi (207 bar)
- Maximum Allowable Flow: 45 gpm (170 l/min)

Winches

Boom Winch

- Planetary, single speed, dual brake system
- Wire rope installed: 150 ft (45.7 m)
- Max. cable capacity: 368 ft (112 m)
- Wire Rope Diameter: 5/8 in (16 mm)*
- * Minimum breaking strength: 41,200 lb (18,688 kg)

Load Winch

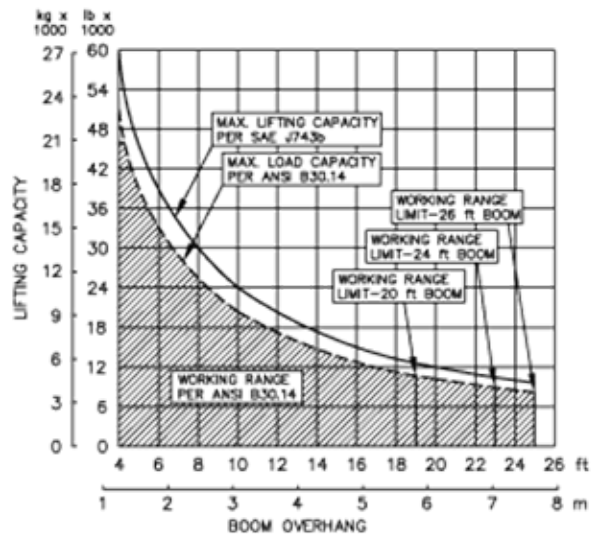
- Planetary, two-speed, dual brake system, Free-fall
- Wire rope installed: 160 ft (48.8 m)
- Max. cable capacity: 423 ft (129 m)
- Wire Rope Diameter: 3/4 in (19 mm)*
- * Maximum breaking strength: 58,800 lb (26,672 kg)

Weights

- Removable counterweight segments: 6 segments @ 896 (406 kg) each
- Total extendible counterweight (segments and frame): 8,200 lb (3,720 kg)
- Total sideboom attachment weight: 15,500 lb (7,031 kg)



M560c Hydraulic Sideboom Attachment



SPECIFIED EQUIPMENT:

- 5/8" (16 mm) WIRE ROPE [41,200 lb (18,688 kg) MIN. BREAKING STRENGTH]
- 3/4" (19 mm) WIRE ROPE [58,800 lb (26,672 kg) MIN. BREAKING STRENGTH]
- 4 PART LOAD LINE (3/4"), 3 PART BOOM LINE (5/8")
- 20 ft (6.1 m) BOOM (STANDARD), 24 ft (7.3 m), 26 ft (7.9 m) BOOM (OPTIONAL)
- 23 ton (20.9 metric ton) WLL HOOK BLOCK
- 8,200 lb (3,720 kg) COUNTERWEIGHT (EXTENDED)

M560c**Features**

- Tubular A-frame boom engineered for exceptional support at maximum lift capacity and easy detachment.
- Multi-axis, hydraulic joystick allows simultaneous control of load and boom functions with one hand. Single lever, hydraulic remote control valves are used for counterweight and two-speed functions. The controls are easy to operate and require minimal operator training.
- Hydraulic boom stop automatically prevents system over travel and damage to boom
- System employs tractor's existing hydraulic pump, filter and reservoir for convenience of replacement parts and maintenance.
- Sideboom features quick release hinge pins for easy boom removal and maintenance.
- Hydraulically operated, four-bar linkage counterweight system adds maximum stability and lifting capability. Low, compact design provides balanced weight distribution for optimum operating control and excellent visibility.
- Optional boom lengths available.

Tractor Models

John Deere 750J LGP
Komatsu D61P

Midwestern's sidebooms are manufactured, installed, and tested to meet the requirements outlined in ANSI/AMSE B30. 14-2004 for sideboom tractors. Capacity ratings are made with the tractor on flat, level ground with the rating load hanging from the load-line hook per SAE J743-92. All Midwestern structural welding complies with the American Welding Society (AWS) Code Welding Earthmoving and Construction Equipment D14.3-94.

Notes