

M540ck

Lifting Capacity

- Maximum Lift: 40,000 lb (18,144 kg)*
- Maximum Load: 34,000 lb (15,422 kg)*
- Maximum Working Load: 30,000 lb (13,608 kg)*
- *@ 4 ft overhang

Boom and Blocks

- Standard Boom: 20 ft (6.1 m)
- Boom Line Parts: 3
- Load Line Parts: 3
- Typical Hook Speed (HI/LOW): 70/35 ft/min (21.3/10.7 m/min)

Hydraulic System

- Directional Control Valve: 3-Section, load sense, pressure compensated with pilot controls
- Maximum Operating Pressure: 3,625 psi (207 bar)
- Maximum Allowable Flow: 45 gpm (170 l/min)

Winches

Boom Winch

- Planetary, single speed, dual brake system
- Wire rope installed: 150 ft (45.7 m)
- Max. cable capacity: 280 ft (85 m)
- Wire Rope Diameter: 5/8 in (16 mm)*

Load Winch

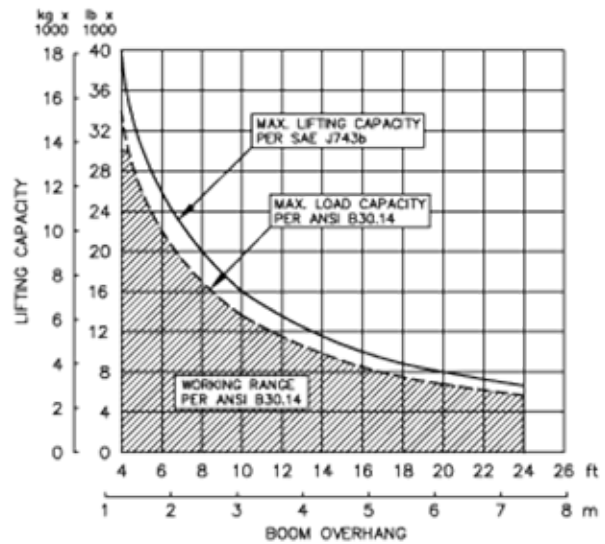
- Planetary, two-speed, dual brake system, Free-fall optional
- Wire rope installed: 150 ft (45.7 m)
- Max. cable capacity: 280 ft (85 m)
- Wire Rope Diameter: 5/8 in (16 mm)*
- * Minimum breaking strength: 41,200 lb (18,688 kg)

Weights

- Counterweight segment: 9 @ 377 lb (171 kg) each
- Total extendible counterweight: 3,395 lb (1,540 kg)
- Total sideboom attachment weight: 11,500 lb (5,216 kg)



M540ck Hydraulic Sideboom Attachment



SPECIFIED EQUIPMENT:

- 5/8" (16 mm) WIRE ROPE [41,200 lb (18,688 kg) MIN. BREAKING STRENGTH]
- 3 PART LOAD LINE, 3 PART BOOM LINE
- 20 ft (6.1 m) BOOM (STANDARD), 24 ft (7.3 m) BOOM (OPTIONAL)
- 15 ton (13.6 metric ton) WLL HOOK BLOCK
- 5,300 lb (2,404 kg) COUNTERWEIGHT (EXTENDED)

M540ck**Features**

- Tubular A-Frame boom engineered for exceptional support at maximum lift capacity and easy detachment.
- Multi-axis, hydraulic joystick allows simultaneous, precise control of the load and boom functions with one hand. Single lever, hydraulic remote control valves are used for counterweight and two-speed functions. The controls are easy to operate and require minimal operator training.
- Hydraulic boom stop automatically prevents system over travel and damage to boom
- System employs tractor's existing hydraulic pump, filter and reservoir for convenience of replacement parts and maintenance.
- Sideboom features quick release hinge pins for easy boom removal and maintenance.
- Hydraulic oil cooler.
- Hydraulically operated counterweight system adds maximum stability and lifting capability. Low, compact design provides balanced weight distribution for optimum operating control and excellent visibility.
- Equipped with skylight window to view boom and upper block.
- Optional boom lengths available.
- Optional free-fall function on load winch.

Tractor Models

Caterpillar D6K LGP

Midwestern's sidebooms are manufactured, installed, and tested to meet the requirements outlined in ANSI/AMSE B30. 14-2004 for sideboom tractors. Capacity ratings are made with the tractor on flat, level ground with the rating load hanging from the load-line hook per SAE J743-92. All Midwestern structural welding complies with the American Welding Society (AWS) Code Welding Earthmoving and Construction Equipment D14.3-94.

Notes