

## M540c on a Case 1150K WT & LGP

### Lifting Capacity

- Maximum Lift: 40,000 lb (18,144 kg)\*
  - Maximum Load: 34,000 lb (15,422 kg)\*
  - Maximum Working Load: 30,000 lb (13,608 kg)\*
- \*@ 4 ft overhang

### Boom and Blocks

- Standard Boom: 20 ft (6.1 m)
- Boom Line Parts: 3
- Load Line Parts: 3
- Typical Hook Speed (HI/LOW): 80/40 ft/min (24.3/12.1 m/min)

### Hydraulic System

- Directional Control Valve: 3-Section, open center or load sense, pressure compensated with manual levers
- Maximum Operating Pressure: 3,000 psi (207 bar)
- Maximum Allowable Flow: 40 gpm (151 l/min)

### Winches

#### Boom Winch

- Planetary, single speed, dual brake system
- Wire rope installed: 150 ft (45.7 m)
- Max. cable capacity: 368 ft (112 m)
- Wire Rope Diameter: 5/8 in (16 mm)\*

#### Load Winch

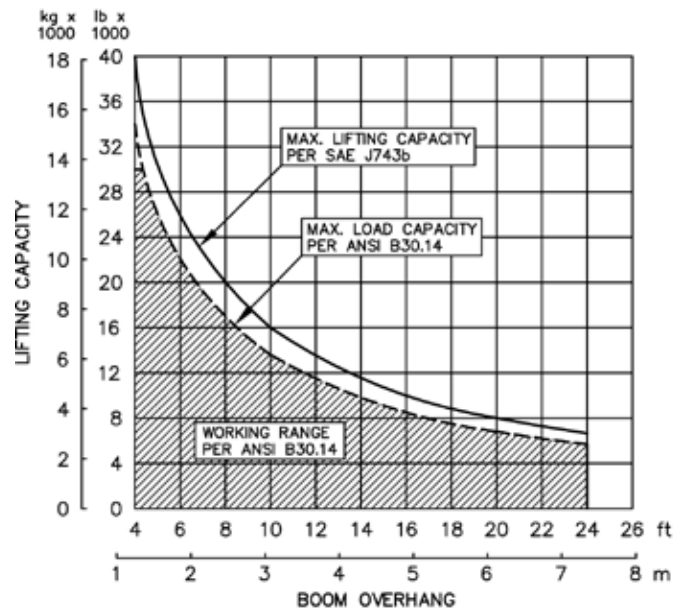
- Planetary, two-speed, dual brake system, free-fall
  - Wire rope installed: 150 ft (45.7 m)
  - Max. cable capacity: 368 ft (112 m)
  - Wire Rope Diameter: 5/8 in (16 mm)\*
- \* Minimum breaking strength: 41,200 lb (18,688 kg)

### Weights

- Counterweight segment: 3,395 lb (1,539 kg) (not removable)
- Total extendible counterweight: 5,300 lb (2,404 kg)
- Total attachment weight: 10,650 lb (4,831 kg)



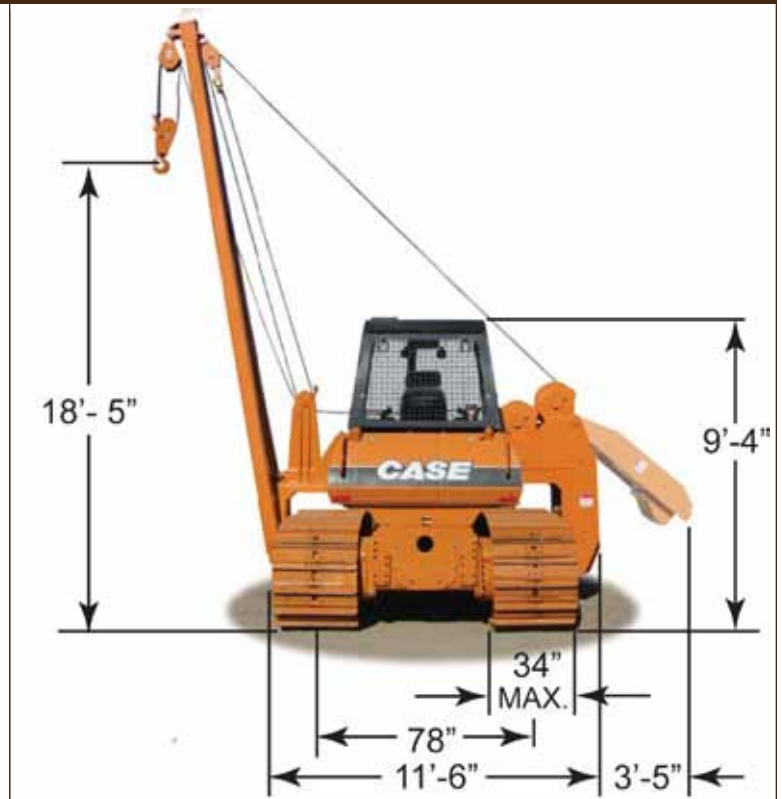
## M540c Hydraulic Sideboom Attachment



## M540c on a Case 1150K WT & LGP

### Features

- Tubular A-Frame boom engineered for exceptional support at maximum lift capacity and easy detachment.
- Three lever hydraulic control system allows simultaneous control of load and boom functions. The controls are easy to operate and require minimal operator training.
- Hydraulic boom stop automatically prevents system over travel and damage to boom
- System employs tractor's existing hydraulic pump, filter and reservoir for convenience of replacement parts and maintenance.
- Sideboom features quick release hinge pins for easy boom removal and maintenance.
- Hydraulic oil cooler.
- Sideboom attachment can be used in conjunction with tractor's original equipment.
- Hydraulically operated, four-bar linkage counterweight system adds maximum stability and lifting capability. Low, compact design provides balanced weight distribution for optimum operating control and excellent visibility. Counterweight segments can be easily removed for shipping.



## M540c Hydraulic Sideboom Attachment

Midwestern's sidebooms are manufactured, installed, and tested to meet the requirements outlined in ANSI/AMSE B30. 14-2004 for sideboom tractors. Capacity ratings are made with the tractor on flat, level ground with the rating load hanging from the load-line hook per SAE J743-92. All Midwestern structural welding complies with the American Welding Society (AWS) Code Welding Earthmoving and Construction Equipment D14.3-94.