

## M520c on a Caterpillar D5K XL

### Lifting Capacity

- Maximum Lift: 20,000 lb (9,072 kg)\*
- Maximum Load: 17,000 lb (7,711 kg)\*
- Maximum Working Load: 17,000 lb (7,711 kg)\*  
\*@ 4 ft overhang

### Boom and Blocks

- Standard Boom: 15 ft (4.6 m) (folding)
- Boom Line Parts: 2
- Load Line Parts: 3
- Typical Hook Speed (HI/LOW): 30 ft/min (9.1 m/min)

### Hydraulic System

- Directional Control Valve: 3-Section, open center with manual levers
- Maximum Operating Pressure: 3,000 psi (207 bar)
- Maximum Allowable Flow: 24 gpm (91 l/min)

### Winches

#### Boom Winch

- Planetary, single speed, dual brake system
- Wire rope installed: 52 ft (15.8 m)
- Max. cable capacity: 102 ft (31.1 m)
- Wire Rope Diameter: 1/2 in (13 mm)\*\*

#### Load Winch

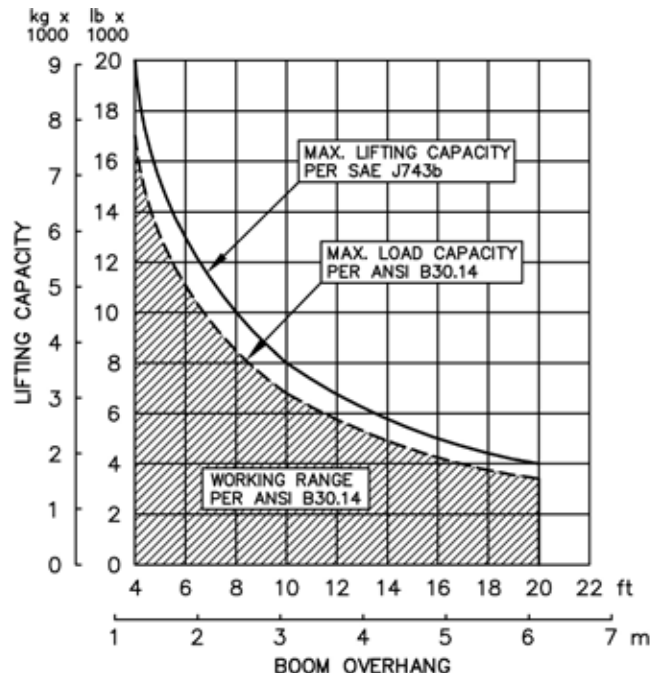
- Planetary, single speed, dual brake system, free-fall
- Wire rope installed: 85 ft (25.9 m)
- Max. cable capacity: 320 ft (97.5 m)
- Wire Rope Diameter: 9/16 in (14 mm)\*
- \* Minimum breaking strength: 26,600 lb (12,065 kg)
- \*\* Minimum breaking strength: 33,600lb (15,241 kg)

### Weights

- Removable counterweight segments: 2 segments at 1,120 (508 kg) each
- Total extendible counterweight: 3,470 lb (1,574 kg)
- Total sideboom attachment weight: 6,200 lb (2,812kg)
- Total shipping weight: 27,800 lb (12,609 kg)



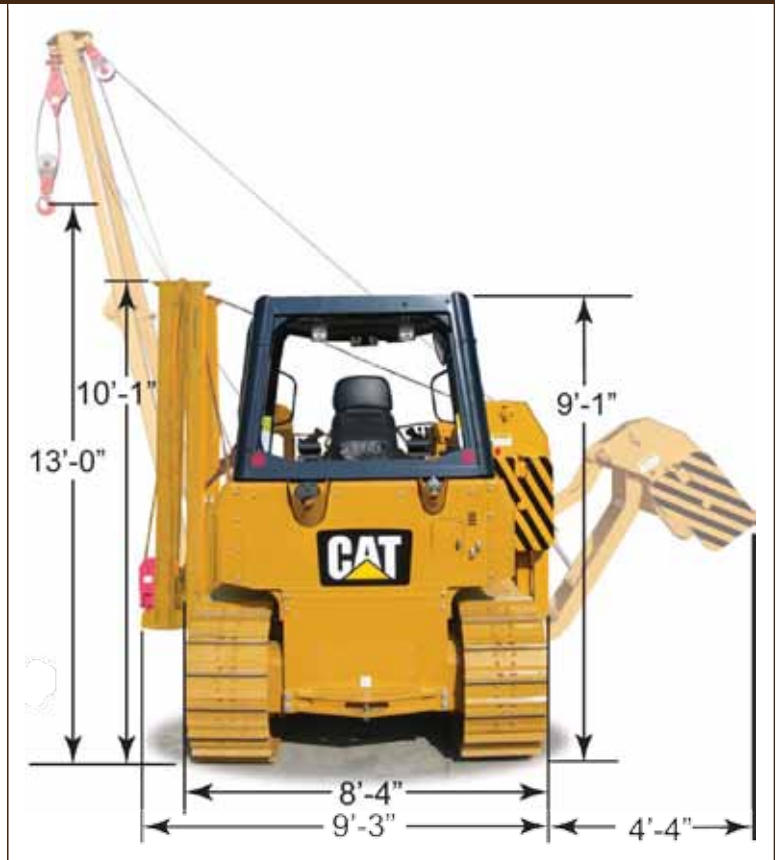
## M520c Hydraulic Sideboom Attachment



## M520c on a Caterpillar D5K XL

### Features

- Folding boom for ease of transportation.
- Three lever hydraulic control system allows simultaneous control of load and boom functions. The controls are easy to operate and require minimal operator training.
- Hydraulic boom stop automatically prevents system over travel and damage to boom
- System employs tractor's existing hydraulic pump, filter and reservoir for convenience of replacement parts and maintenance.
- Sideboom features quick release hinge pins for easy boom removal and maintenance.
- Sideboom attachment can be used in conjunction with tractor's original equipment.
- Hydraulically operated, four-bar linkage counterweight system adds maximum stability and lifting capability. Low, compact design provides balanced weight distribution for optimum operating control and excellent visibility. Counterweight segments can be easily removed for shipping.
- Optional 2-speed load winch available
- Optional boom lengths available



## M520c Hydraulic Sideboom Attachment

Midwestern's sidebooms are manufactured, installed, and tested to meet the requirements outlined in ANSI/AMSE B30. 14-2004 for sideboom tractors. Capacity ratings are made with the tractor on flat, level ground with the rating load hanging from the load-line hook per SAE J743-92. All Midwestern structural welding complies with the American Welding Society (AWS) Code Welding Earthmoving and Construction Equipment D14.3-94.