

## M515c

### Lifting Capacity

- Maximum Lift: 15,000 lb (6,804 kg)\*
- Maximum Load: 12,750 lb (5,783 kg)\*
- Maximum Working Load: 12,000 lb (5,443 kg)\*
- \*@ 4 ft overhang

### Boom and Blocks

- Standard Boom: 15 ft (4.6 m)
- Boom Line Parts: 2
- Load Line Parts: 2
- Typical Hook Speed (HI/LOW): 40 ft/min (12.2 m/min)

### Hydraulic System

- Directional Control Valve: 3-Section, open center with manual levers
- Maximum Operating Pressure: 3,000 psi (207 bar)
- Maximum Allowable Flow: 24 gpm (91 l/min)

### Winches

#### Boom Winch

- Planetary, single speed, dual brake system
- Wire rope installed: 52 ft (15.8 m)
- Max. cable capacity: 102 ft (31.1 m)
- Wire Rope Diameter: 1/2 in (13 mm)\*

#### Load Winch

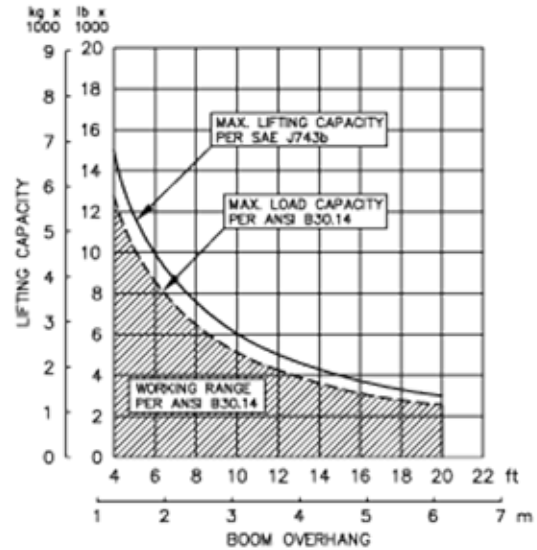
- Planetary, single speed, dual brake system
- Wire rope installed: 90 ft (27.4 m)
- Max. cable capacity: 102 ft (31.1 m)
- Wire Rope Diameter: 1/2 in (13 mm)\*
- \* Minimum breaking strength: 26,600 lb (12,065 kg)

### Weights

- Removable counterweight segments: 2 segments @ 560 lb (254 kg) each
- Total extendible counterweight: 2,350 lb (1,066 kg)
- Total sideboom attachment weight: 4,900 lb (2,223 kg)



## M515c Hydraulic Sideboom Attachment



**SPECIFIED EQUIPMENT:**  
 1/2" (12.7 mm) WIRE ROPE [26,600 lb (12,065 kg) MIN. BREAKING STRENGTH]  
 2 PART LOAD LINE, 2 PART BOOM LINE  
 15 ft (4.6 m) FOLDING BOOM (STANDARD)  
 16 ft (4.9 m), 18 ft (5.5 m), 20 ft (6.1 m) FOLDING BOOM (OPTIONAL)  
 2,350 lb (1,066 kg) COUNTERWEIGHT (EXTENDED)

**M515c****Features**

- Folding boom for ease of transportation.
- Three lever hydraulic control system allows simultaneous control of load and boom functions. The controls are easy to operate and require minimal operator training.
- Hydraulic boom stop automatically prevents system over travel and damage to boom
- System employs tractor's existing hydraulic pump, filter and reservoir for convenience of replacement parts and maintenance.
- Sideboom features quick release hinge pins for easy boom removal and maintenance.
- Sideboom attachment can be used in conjunction with tractor's original equipment.
- Hydraulically operated, four-bar linkage counterweight system adds maximum stability and lifting capability. Low, compact design provides balanced weight distribution for optimum operating control and excellent visibility. Counterweight segments can be easily removed for shipping.
- Optional two-speed load winch available.
- Optional boom lengths available.

**Tractor Models**

Caterpillar D4C (Hystat)  
Caterpillar D4C XL (Hystat)  
Caterpillar D4C LGP (Hystat)  
Caterpillar D4G XL  
Caterpillar D4G LGP

John Deere 550G LT  
John Deere 550G LGP  
John Deere 550H LT  
John Deere 550H LGP  
John Deere 550J LT  
John Deere 550J LT

Case 650K LT  
Case 650K LGP  
Case 750G  
Case 750K LT

Komatsu D37P

Midwestern's sidebooms are manufactured, installed, and tested to meet the requirements outlined in ANSI/AMSE B30. 14-2004 for sideboom tractors. Capacity ratings are made with the tractor on flat, level ground with the rating load hanging from the load-line hook per SAE J743-92. All Midwestern structural welding complies with the American Welding Society (AWS) Code Welding Earthmoving and Construction Equipment D14.3-94.

**Notes**