

M510c

Lifting Capacity

- Maximum Lift: 10,000 lb (4,536 kg)*
- Maximum Load: 8,500 lb (3,856 kg)*
- Maximum Working Load: 8,500 lb (3,856 kg)*
- *@ 4 ft overhang

Boom and Blocks

- Standard Boom: 15 ft (4.6 m) folding
- Boom Line Parts: 2
- Load Line Parts: 2
- Typical Hook Speed (HI/LOW): 40 ft/min (12.2 m/min)

Hydraulic System

- Directional Control Valve: 3-Section, open center with manual levers
- Maximum Operating Pressure: 3,000 psi (207 bar)
- Maximum Allowable Flow: 24 gpm (91 l/min)

Winches

Boom Winch

- Planetary, single speed, dual brake system
- Wire rope installed: 52 ft (15.8 m)
- Max. cable capacity: 102 ft (31.1 m)
- Wire Rope Diameter: 1/2 in (13 mm)*

Load Winch

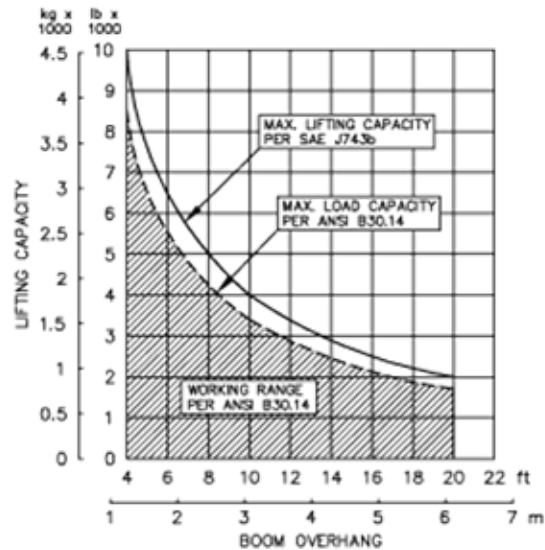
- Planetary, single speed, dual brake system
- Wire rope installed: 90 ft (27.4 m)
- Max. cable capacity: 102 ft (31.1 m)
- Wire Rope Diameter: 1/2 in (13 mm)*
- * Minimum breaking strength: 26,600 lb (12,065 kg)

Weights

- Removable counterweight segments: 2 segments @ 280 lb (127 kg) each
- Total extendible counterweight: 1,780 lb (807 kg)
- Total sideboom attachment weight: 4,330 lb (1,964 kg)



M510c Hydraulic Sideboom Attachment



SPECIFIED EQUIPMENT:
 1/2" (12.7 mm) WIRE ROPE [26,600 lb (12,065 kg) MIN. BREAKING STRENGTH]
 2 PART LOAD LINE, 2 PART BOOM LINE
 15 ft (4.6 m) FOLDING BOOM (STANDARD)
 18 ft (4.9 m), 18 ft (5.5 m), 20 ft (6.1 m) FOLDING BOOM (OPTIONAL)
 1,780 lb (807 kg) COUNTERWEIGHT (EXTENDED)

M510c**Features**

- Folding boom for ease of transportation.
- Three lever hydraulic control system allows simultaneous control of load and boom functions. The controls are easy to operate and require minimal operator training.
- Hydraulic boom stop automatically prevents system over travel and damage to boom.
- System employs tractor's existing hydraulic pump, filter and reservoir for convenience of replacement parts and maintenance.
- Sideboom features quick release hinge pins for easy boom removal and maintenance.
- Hydraulic oil cooler.
- Hydraulically operated, four-bar linkage counterweight system adds maximum stability and lifting capability. Low, compact design provides balanced weight distribution for optimum operating control and excellent visibility. Counterweight segments can be easily removed for shipping.
- Optional two-speed load winch available.
- Optional boom lengths available.

Tractor Models

Caterpillar D3C (Hystat)
Caterpillar D3C XL (Hystat)
Caterpillar D3C LGP (Hystat)
Caterpillar D3G XL
Caterpillar D3G LGP

John Deere 450G
John Deere 450G LT
John Deere 450G LGP
John Deere 450H
John Deere 450H LT
John Deere 450H LGP
John Deere 450J
John Deere 450J LT
John Deere 450J LGP

Case 650G
Case 650K LT
Case 650 LGP

Komatsu D37EX-21

Midwestern's sidebooms are manufactured, installed, and tested to meet the requirements outlined in ANSI/AMSE B30. 14-2004 for sideboom tractors. Capacity ratings are made with the tractor on flat, level ground with the rating load hanging from the load-line hook per SAE J743-92. All Midwestern structural welding complies with the American Welding Society (AWS) Code Welding Earthmoving and Construction Equipment D14.3-94.