

M10R Hydraulic Telescopic Sideboom Attachment

Lifting Capacity

- Maximum Lift: 10,000 lb (4,536 kg)*
- Maximum Load: 6,500 lb (2,948 kg)*
- Maximum Working Load: 5,100 lb (2,313 kg)*

*@ 4 ft overhang

Boom and Blocks

- Standard Boom: 7-12 ft (2.1-3.7 m) telescoping
- Load Line Parts: 1
- Typical Hook Speed: 65 ft/min (19.8 m/min)

Hydraulic System

- Directional Control Valve: 3-Section, open or closed center with cable controls
- Maximum Operating Pressure: 3,000 psi (207 bar)
- Maximum Allowable Flow: 20 gpm (76 l/min)

Winches

Load Winch

- Worm gear, single speed
- Wire rope installed: 45 ft (13.7 m)
- Max. cable capacity: 44 ft (13.4 m)
- Wire Rope Diameter: 7/16 in (11 mm)*
- * Minimum breaking strength: 20,400 lb (9,253kg)

Weights

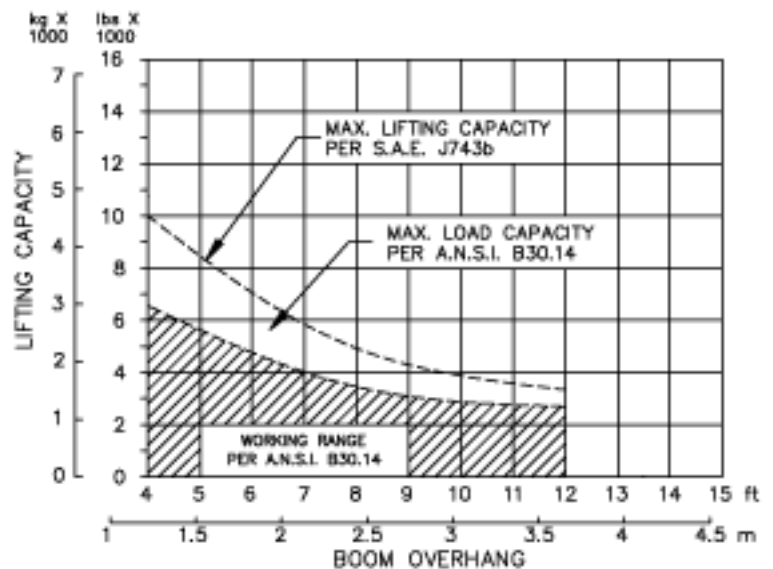
- Removable counterweight segments: 700 lb (318 kg) each
- Total sideboom attachment weight: 1,700 lb (771 kg)

Features

- Tubular telescoping boom engineered for exceptional support at maximum lift capacity and ease of transportation.
- Three lever cable control system for all sideboom functions. The controls are easy to operate and require minimal operator training.
- System employs tractor's existing hydraulic pump, filter and reservoir for convenience of replacement parts and maintenance.
- Sideboom attachment can be used in conjunction with tractor's original equipment.



M10R Hydraulic Telescopic Sideboom Attachment



M10R Hydraulic Telescopic Sideboom Attachment**Tractor Models**

Caterpillar 416C
Caterpillar 416D
Caterpillar 420C
Caterpillar 420D
Caterpillar 426C
Caterpillar 426D

John Deere 310C
John Deere 310D
John Deere 310SE
John Deere 310E
John Deere 410D
John Deere 410G
John Deere 510C
John Deere 510D
John Deere 510E

Case 580M
Case 580L
Case 580SL

Terex 970

Midwestern's sidebooms are manufactured, installed, and tested to meet the requirements outlined in ANSI/AMSE B30. 14-2004 for sideboom tractors. Capacity ratings are made with the tractor on flat, level ground with the rating load hanging from the load-line hook per SAE J743-92. All Midwestern structural welding complies with the American Welding Society (AWS) Code Welding Earthmoving and Construction Equipment D14.3-94.