

594 MMC Hydraulic Conversion Kit

Lifting Capacity

- Maximum Lift: 200,000 lb (90,720 kg)*
 - Maximum Load: 150,000 lb (68,039 kg)*
 - Maximum Working Load: 95,200 lb (43,182 kg)*
- *@ 4 ft overhang

Boom and Blocks

- Boom Line Parts: 5
- Load Line Parts: 8
- Typical Hook Speed (HI/LOW): 37/17 ft/min (11.3/5.2 m/min)

Hydraulic System

- Directional Control Valve: 3-Section, closed center with pilot controls
- Maximum Operating Pressure: 4,000 psi (276 bar)
- Maximum Allowable Flow: 70 gpm (265 l/min)

Winches

Boom Winch

- Planetary, two speed, dual brake system
- Wire rope installed: 205 ft (62.5 m)
- Max. cable capacity: 459 ft (140 m)
- Wire Rope Diameter: 3/4 in (19 mm)*

Load Winch

- Planetary, two-speed, dual brake system
 - Wire rope installed: 350 ft (107 m)
 - Max. cable capacity: 459 ft (140 m)
 - Wire Rope Diameter: 3/4 in (19 mm)*
- * Minimum breaking strength: 58,800 lb (26,672 kg)

Weights

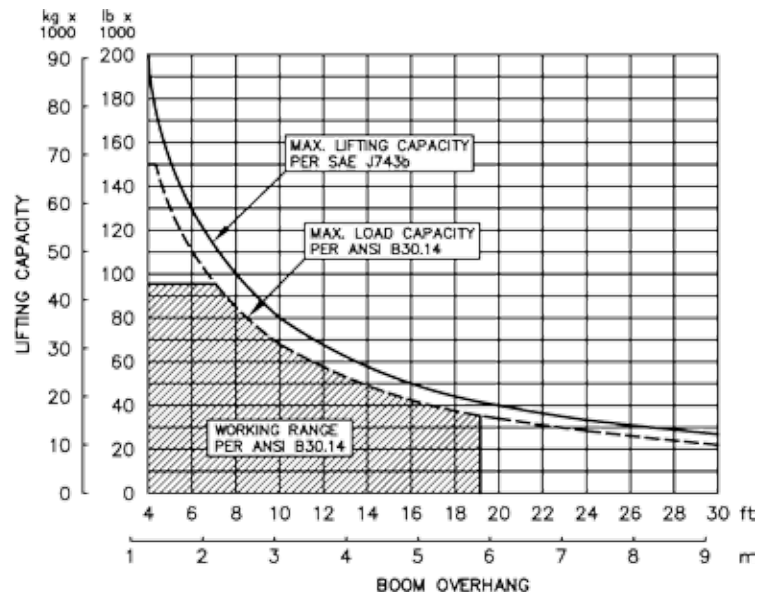
- Total hydraulic conversion kit: 8,600 lb (3,901 kg)

Features

- Multi-axis, hydraulic joystick allows simultaneous, precise control of the load and boom functions with one hand. Single lever, hydraulic remote control valves are used for counterweight and two-speed functions. The controls are easy to operate and require minimal operator training.
- Hydraulic boom stop automatically prevents system over travel and damage to boom.
- Hydraulic oil cooler.
- Free-fall function on load winch.
- Optional boom lengths available.



594 MMC Hydraulic Conversion Kit



Tractor Model

- Caterpillar 594H
- Caterpillar 594G

594 MMC Hydraulic Conversion Kit

Midwestern's sidebooms are manufactured, installed, and tested to meet the requirements outlined in ANSI/AMSE B30. 14-2004 for sideboom tractors. Capacity ratings are made with the tractor on flat, level ground with the rating load hanging from the load-line hook per SAE J743-92. All Midwestern structural welding complies with the American Welding Society (AWS) Code Welding Earthmoving and Construction Equipment D14.3-94.

Notes